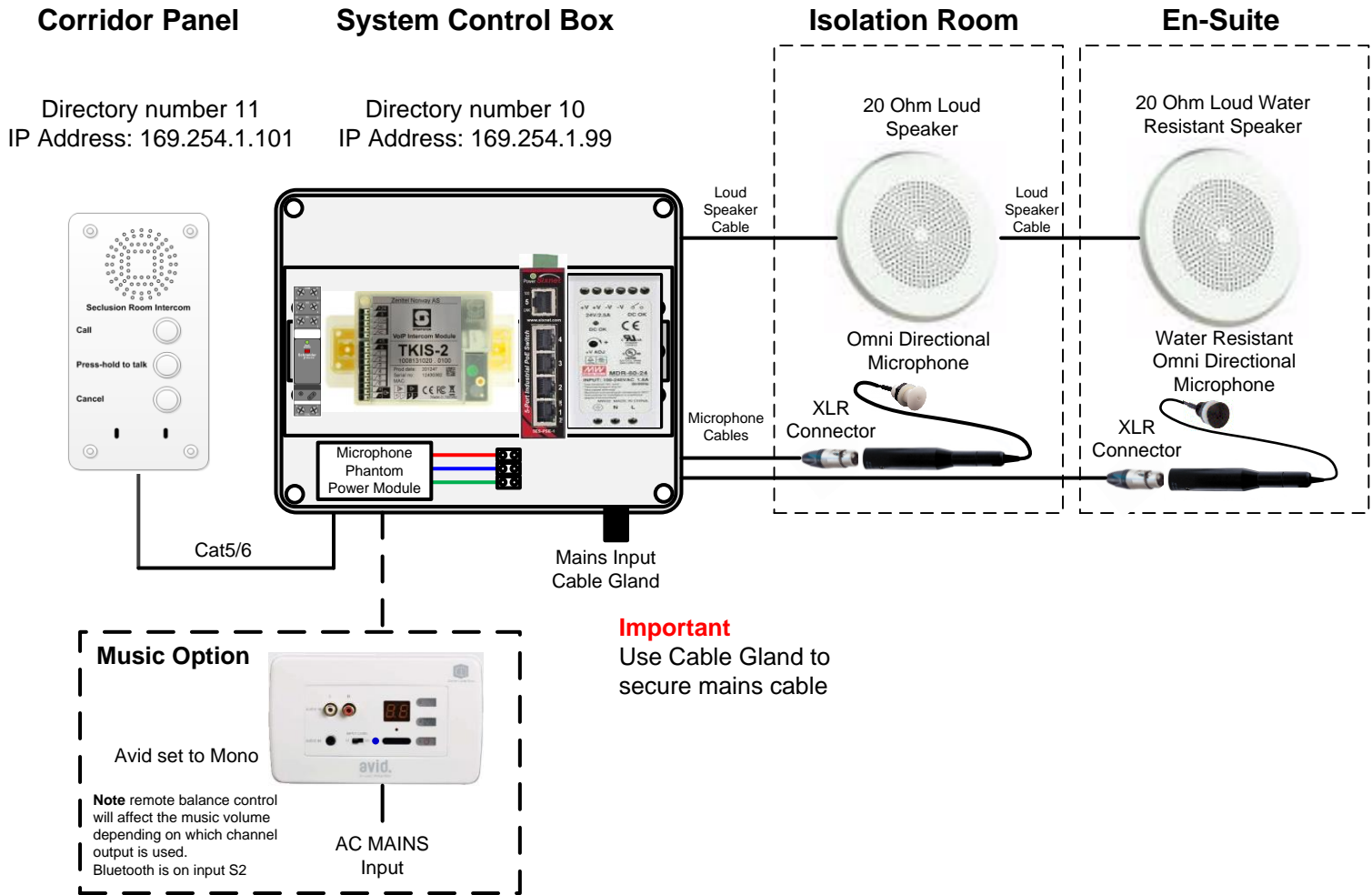


## Isolation Room Intercom with En-Suite and Music Option



### Installation

Corridor panel should be mounted with easy access to controls.  
 System Control Box can be mounted in the corridor ceiling, but may require access.  
 Cable between Control Panel and System Control Box is CAT5 cable.  
 Cable for microphones should be microphone cable, 2 core plus Screen.  
 The speakers requires 2 core speaker cable, use same type cable between Avid if fitted.  
 See Avid installation guide.

### Recommendations

Microphones must be fitted where it can pickup speech and not equipment noise.  
 Loudspeakers and Microphones must be spaced so that there is no Feedback, More than one metre apart.

### Operation

To communicate with the isolation room, press the call button, then press and hold the middle button to talk to the patient, let go of the middle button to return to listen mode.

Patient cannot hear operator without the middle button being pressed.  
 When Pressing the middle button, relay will cut music from Avid (if fitted).  
 Bluetooth setup codes are under face plate, Bluetooth input is on input S2  
 See Avid Manual for operational instructions.

### Close System

To cancel all communications (Switch OFF) press Cancel.  
 Music will still be heard from Avid to speaker.  
 Press ON/OFF button on Avid to turn OFF, then switch off music source.

### System Control Box Wiring

