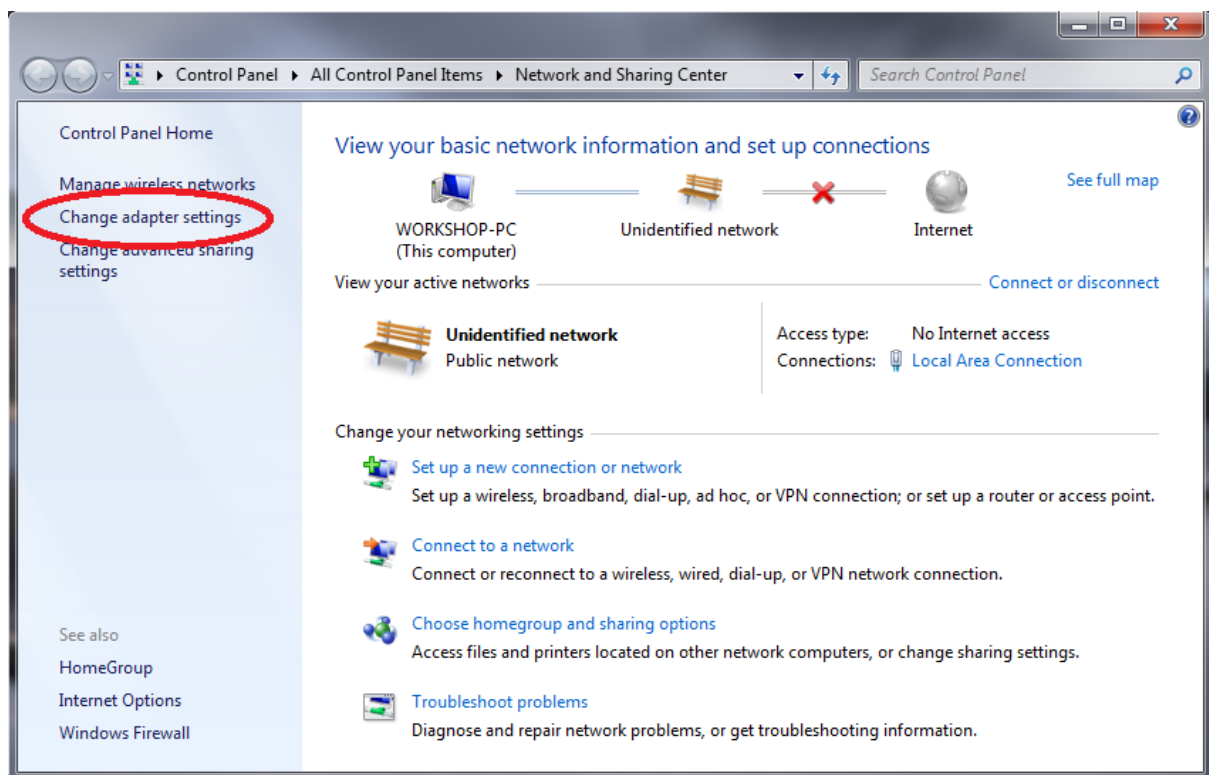


## Changing the IP address for Windows 7 computers.

1. Right click on the '**network icon**' in the status bar which is located on the right of your taskbar in the lower right corner, and then select '**Open Network and Sharing Center**'.



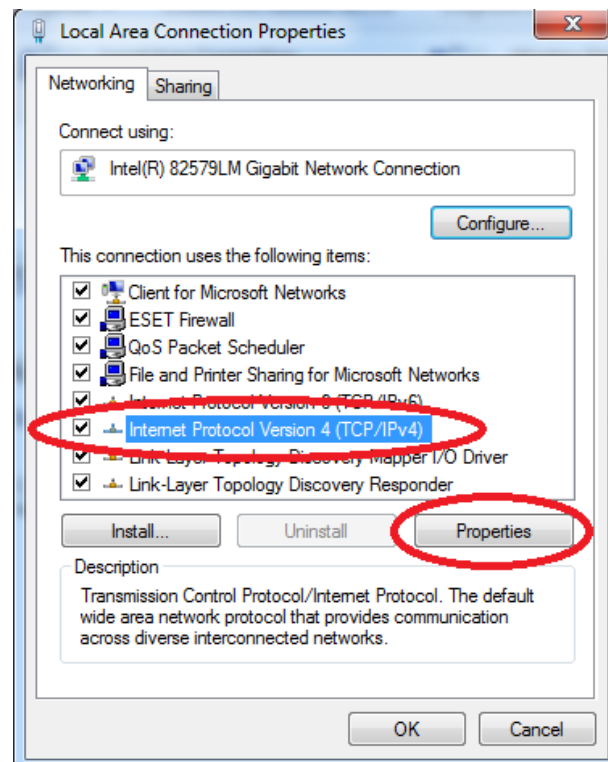
2. Click on '**Change adapter settings**' on the left of the Window.



3. Here you will see your network connections, right click on '**Local Area Connection**' and select '**Properties**'.



4. Now single left click on '**Internet Protocol Version 4 (TCP/IPv4)**' to highlight it and then press the '**Properties**' button below.



5. Select '**Use the following IP address:**' and enter the details below and then click on OK to save the settings.

IP address: **169.254.1.1**

Subnet mask: **255.255.0.0** *(This may be automatically set when you click in the first box.)*

