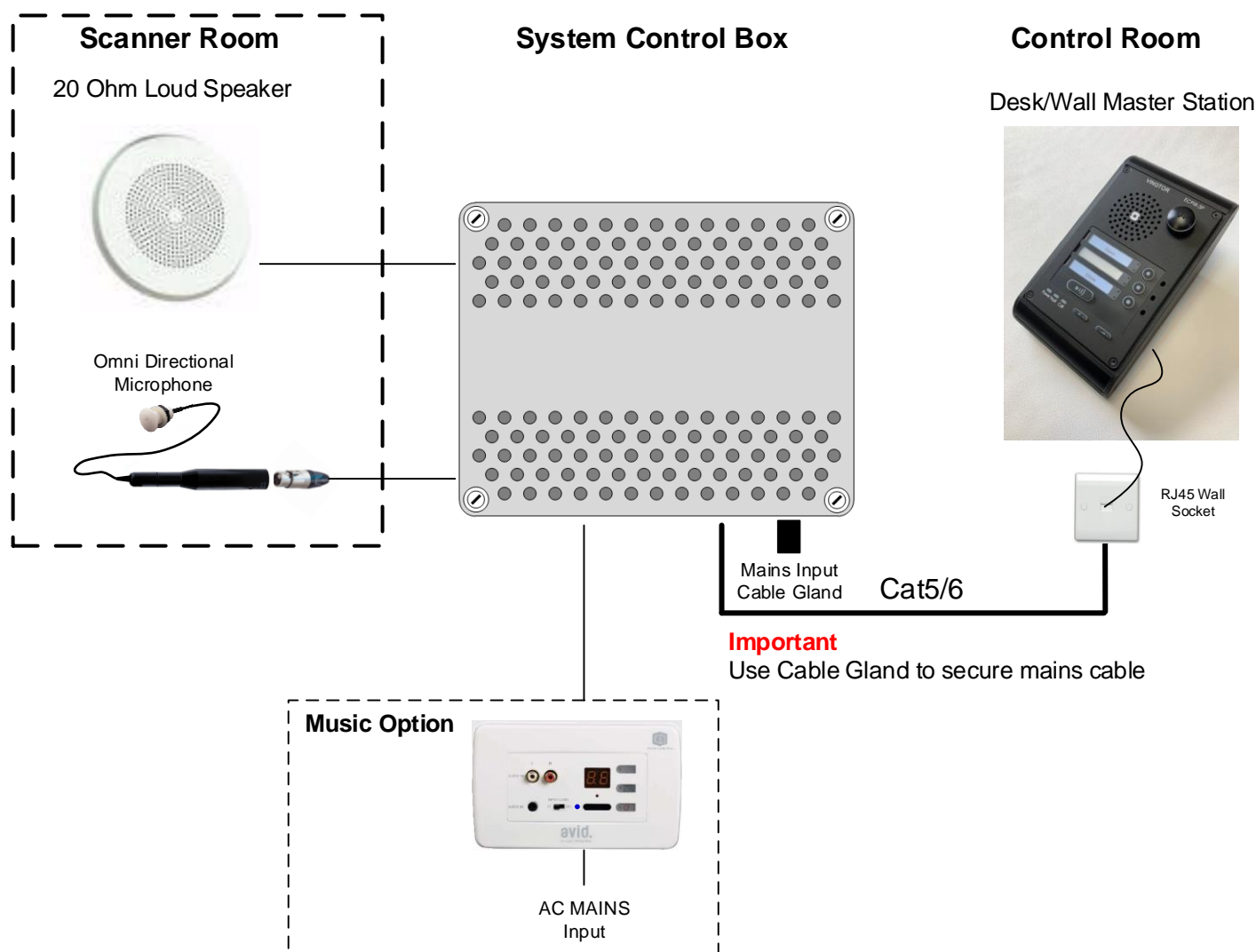


Scanner to Control Room Intercom System – Pulse



Installation

Desk/wall station should be mounted with easy access to controls.
System Control Box can be mounted in the control room with access for maintenance.
Cable between Desk/wall Station and the System Control Box is CAT5E/6 cable.
Cable for microphone should be microphone cable, 2 core plus Screen.
The speaker requires 2 core speaker cable, use same type cable between Avid if fitted.
See Avid installation guide.

Recommendations

Microphone must be fitted where it can pickup speech and not equipment noise. Keep away from aircon units.
Loudspeaker and Microphone must be spaced so that there is no Feedback, More than one metre apart.

Operation

To communicate with the patient on the Scanner, press the “Call” key, this will open the communication system in Listen only mode, then press and hold the “PTT” key to talk to the patient, let go to return to listen mode. Patient in the scanner cannot hear operator without the “PTT” key being pressed. When Pressing the “PTT” key, relay will cut music from Avid (if fitted).

Avid setup

Bluetooth setup codes are under face plate, Bluetooth input is on input S2
See Avid Manual for operational instructions.

Close System

To cancel all communications (Switch OFF) press Cancel.
Music will still be heard from Avid to speaker.
Press ON/OFF button on Avid to turn OFF, then switch off music source.