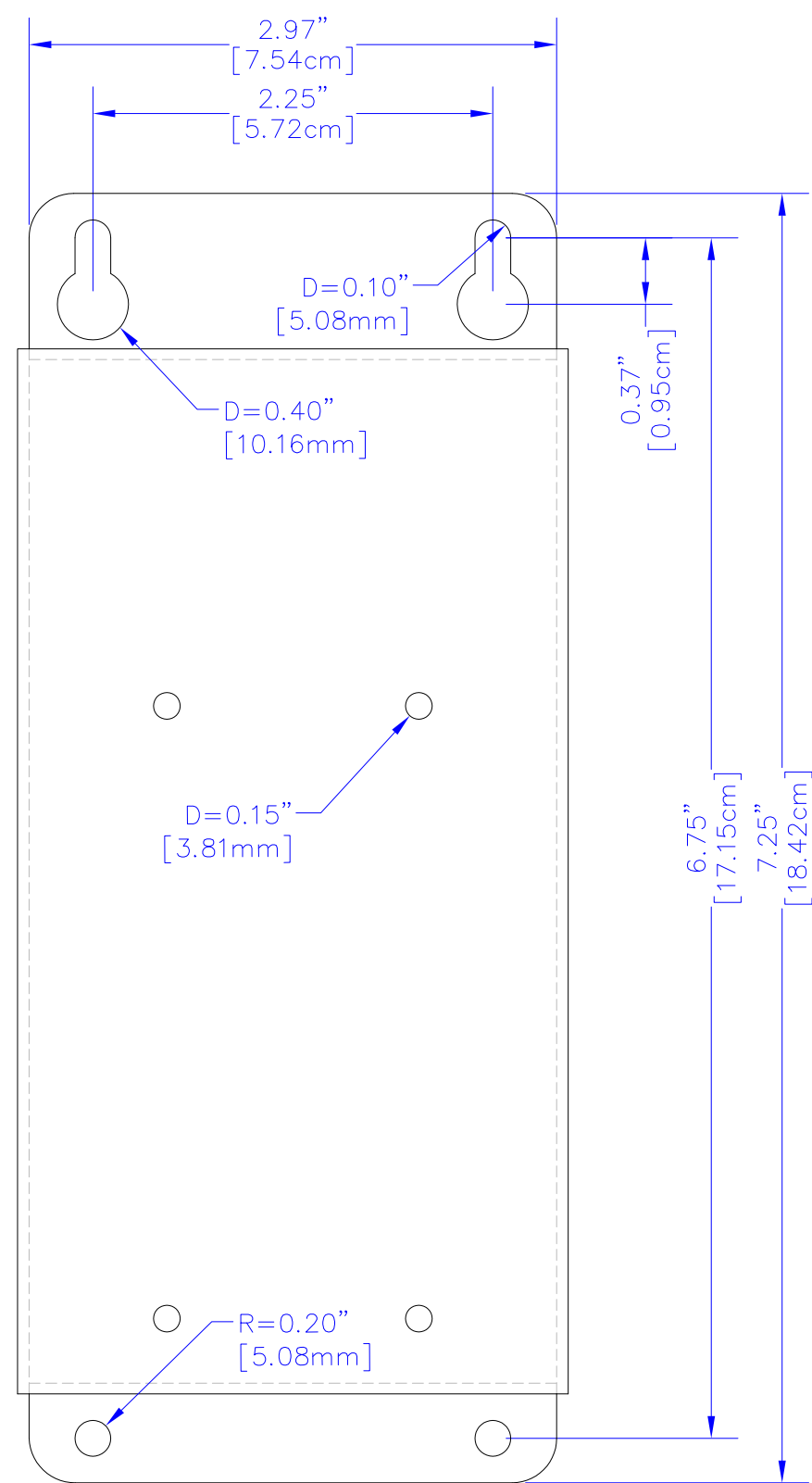
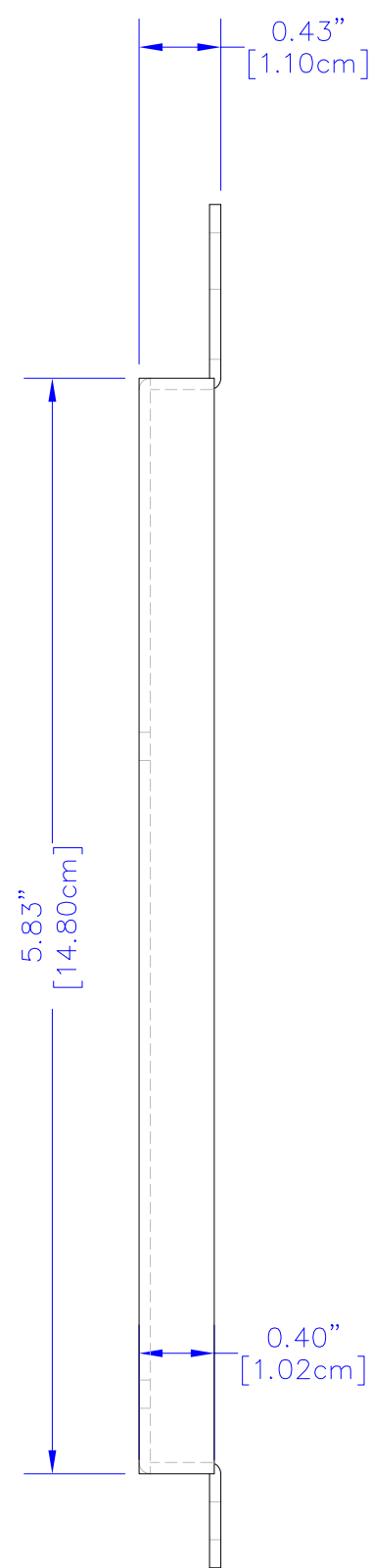


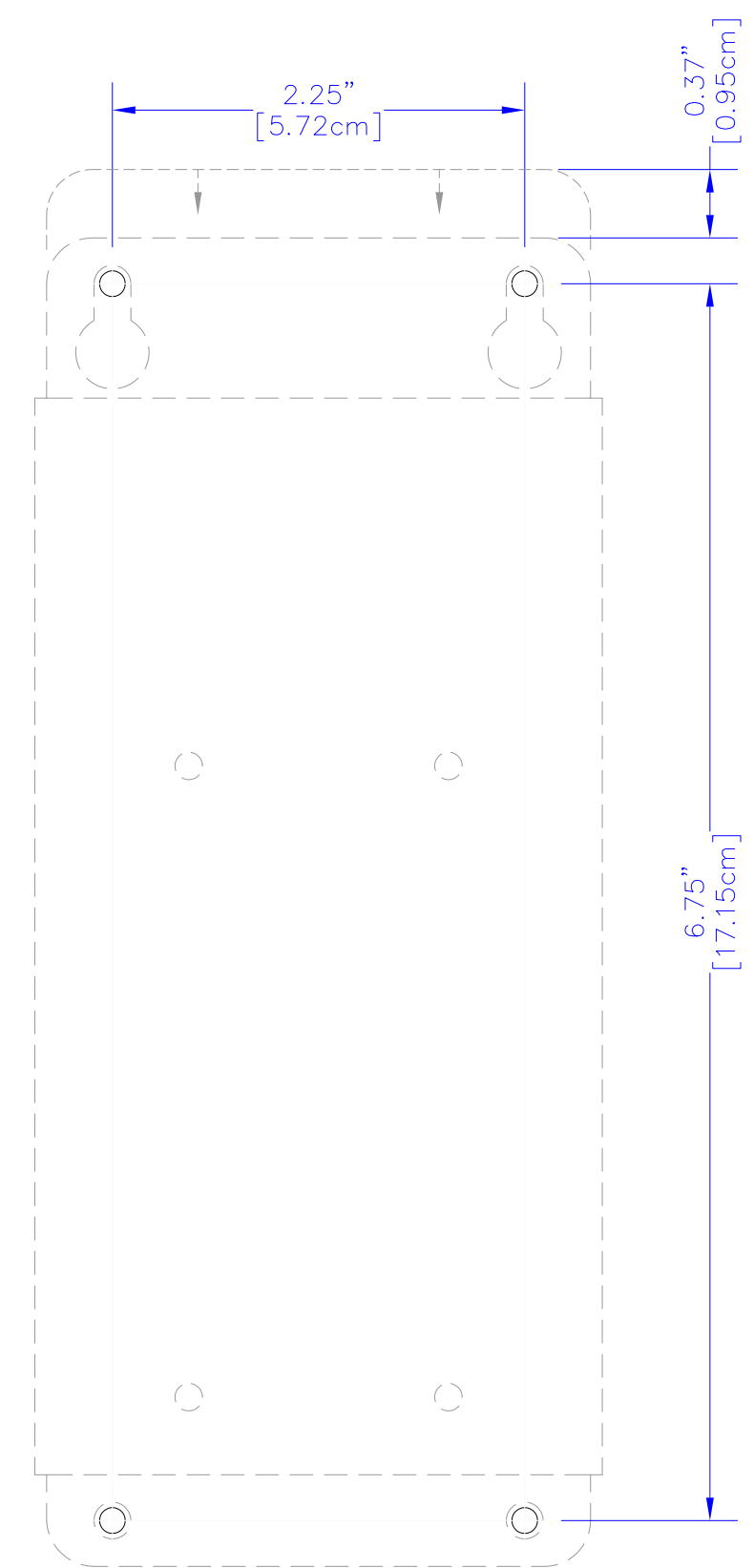
**TOP**



**FRONT**



**RIGHT**



**RECOMMENDED MOUNTING HOLE TEMPLATE**

**NT24k-NM-PMK**  
OPTIONAL PANEL MOUNT BRACKET



3101 International Drive, Building No. 6 - Mobile, Alabama 36606  
 Phone: 251-342-2164 - www.redlion.net - Fax: 251-342-6353  
 Date: 02-18-2015 Drawn By: G.R.S.  
 File Name: NT24k-NM-PMK-ReferenceDrawing.dwg Scale: 1" = 1"

Note: The dimensions shown on this drawing are intended for general reference only. Please refer to the respective user manual of the specific Ethernet switch model to determine the recommended wiring and ventilation clearances.