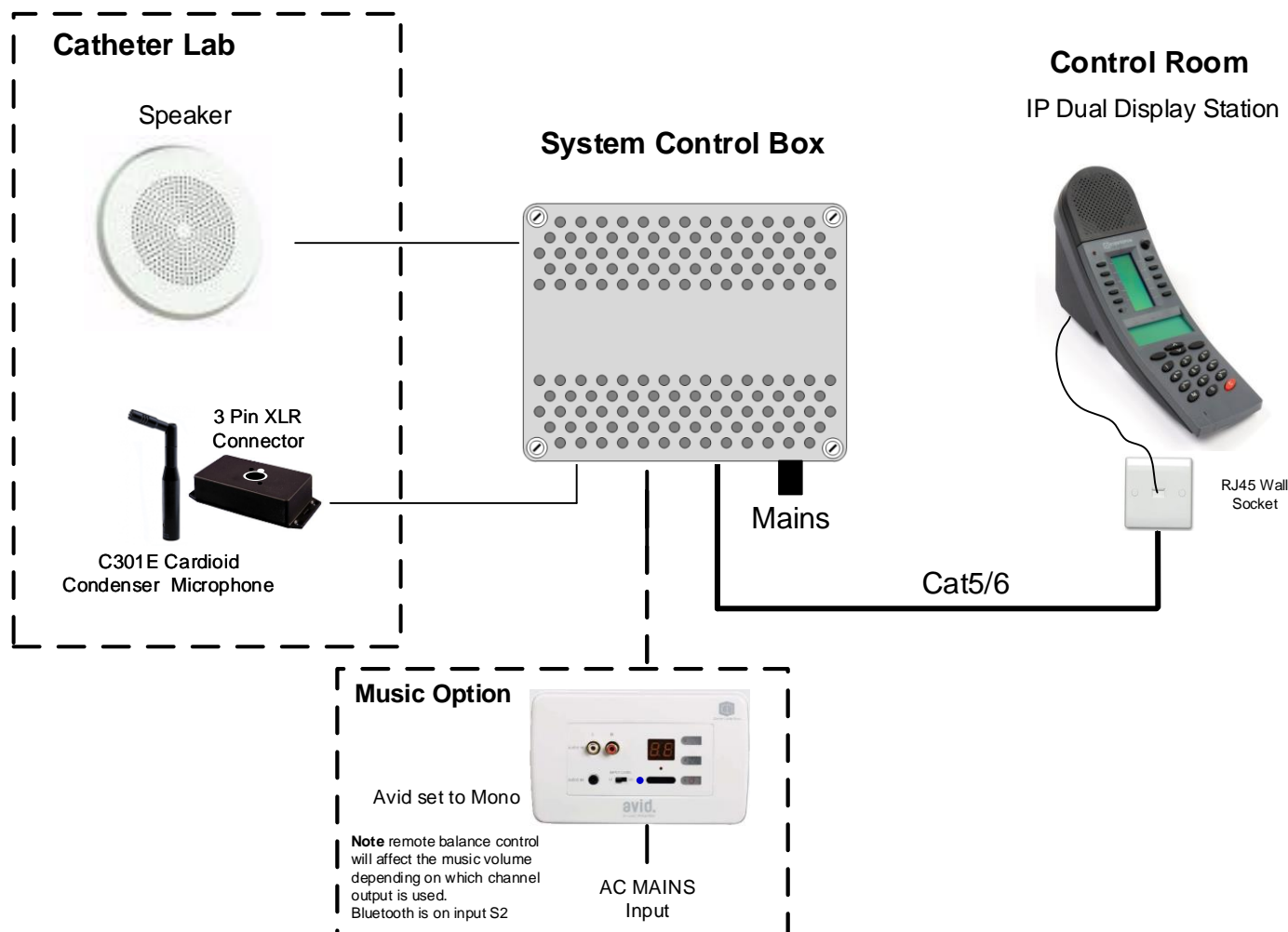


## Cath-Lab to Control Room Intercom System with Music Option – Pulse



### Installation

Desk/wall station should be mounted with easy access to controls.  
System Control Box can be mounted in the ceiling, but may require access for maintenance.  
Cable between Desk/wall Station and the System Control Box is CAT5E/6 cable.  
Cable for microphone should be microphone cable, 2 core plus Screen.  
The speaker requires 2 core speaker cable.  
If music option fitted, 2 core speaker cable is required between device and control box.

### Recommendations

The box for mounting the Cardioid Condenser Microphone can be fitted to the bottom of monitor frame, using double sided sticky foam & Self Taping Screws.  
The microphone must point at the person carrying out the procedure for best pick up. Use the 'knuckle-joint' hinge for positioning and direction of the microphone head..  
Cable for microphone needs running down the cable route for monitor stack. (Normally inside cable stocking)

### Operation

To communicate with the staff in the Cath lab, press the “Call” key, this will open the communication system in Listen only mode, then press and hold the “M” key to talk to the staff, let go to return to listen mode. Staff in the lab cannot hear operator without the “M” key being pressed. When Pressing the “M” key the relay will cut music from Avid (if fitted).

### Close System

To cancel all communications (Switch OFF) press “C”.