

Loops LP0005B Wall Mounted Compact Bluetooth Amplifier



Please Note

All equipment packaging must be kept safe and in a new condition until the system is fully installed, tested and excepted by the client.

Any faulty equipment returned for repair or replacement must be supplied in original packaging and with accessories and documentation.

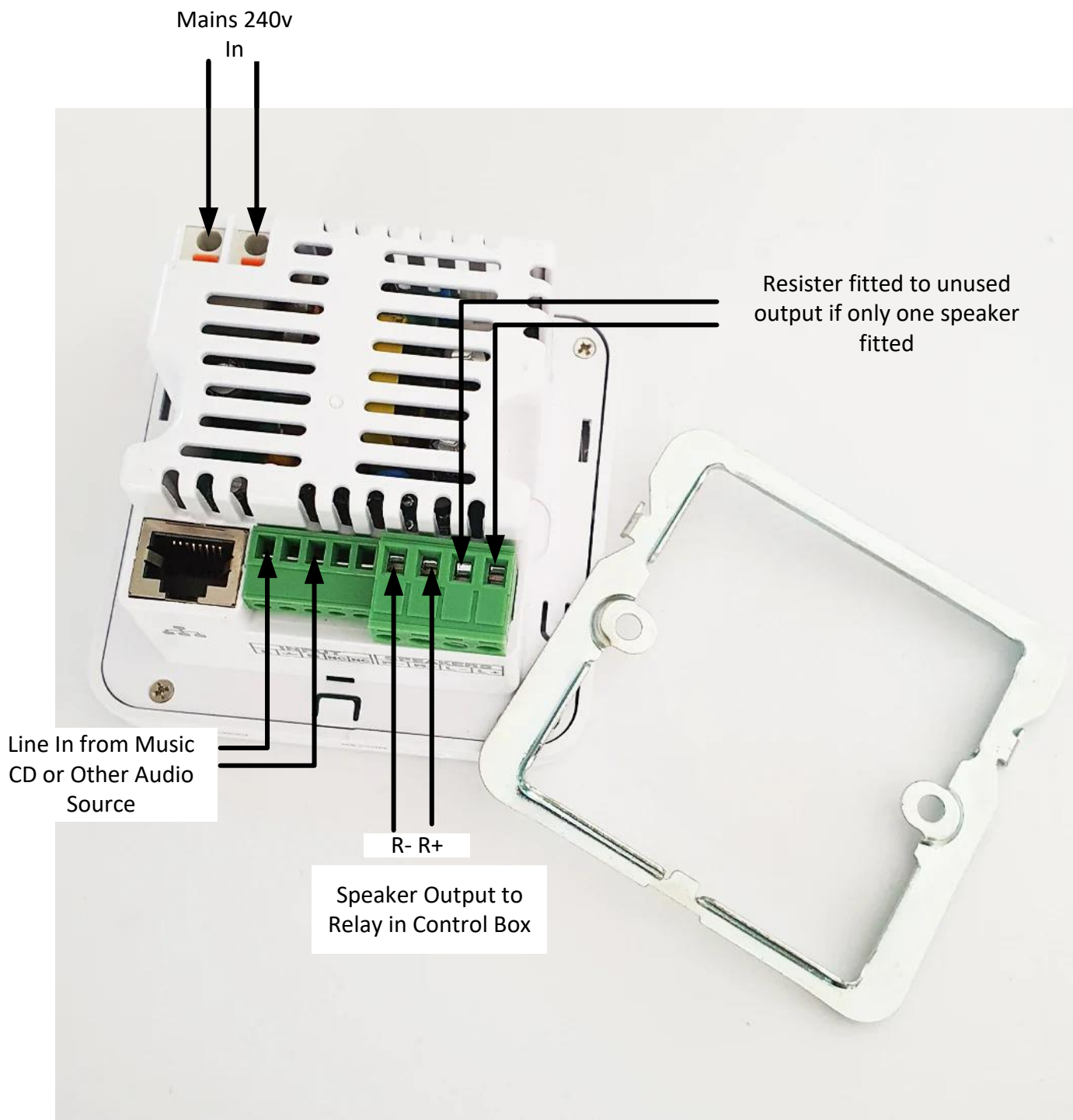
Loops Music Interface User Instructions



- Music Interface should have the following display, if it doesn't press the "M" button until you have this display.
- When you have this display you should see a blue flashing light in top right corner.
- On your phone go to Settings – select Bluetooth it should then be in discoverable mode.
- "smart audio" should appear as a source, select "smart audio" you will see a screen asking if to "allow" or "don't allow" connection, select "allow"
- The screen will then display as below, and you should have connection.
- Volume might need adjusting on your phone, then adjust the amplifier volume. The amplifier volume is on the top edge of the device.
- The Intercom only works in Mono, so for true sound output select Mono output on your phone. You can get instructions on how to do this on the internet.



Loops Bluetooth Connections



- We suggest you use ferrules on the connections.
- The resistor must be fitted to the spare speaker output to protect the amplifier.
- Please see the User Instructions for setup

Music Interface Line Level Audio Feed

PC Mini Jack 3.5mm Audio Level

The audio output level on the mini-jack output of a desktop computer or laptop is typically a line-level signal. Line-level signals are standardized audio signals that have a relatively higher voltage level compared to other audio signals such as microphone-level or instrument-level signals.

The line-level output from a desktop computer's mini-jack is designed to connect to line-level inputs on audio devices such as speakers, headphones, amplifiers, or audio interfaces. It provides a strong enough signal to drive these devices without the need for additional amplification.

However, it's worth noting that the actual output level may vary slightly depending on the specific computer model, sound card, or audio settings. Some computers may offer adjustable output levels or have software controls that allow you to adjust the volume or gain of the audio output.

Desktop or Laptop 3.5mm Mini Audio Jack Audio Output

The wiring details for a 3.5mm audio jack out of a desktop computer typically follow the standard configuration. Here is the commonly used wiring scheme for a 3.5mm TRS (Tip-Ring-Sleeve) audio jack:

Tip (T): Left audio channel (usually colored white or marked with an L)

Ring (R): Right audio channel (usually colored red or marked with an R)

Sleeve (S): Ground or common connection (usually colored black or marked with GND)

Please note that this is the standard configuration, but some manufacturers may use different color codes or markings for their audio jacks. It's always a good idea to consult the documentation or the manufacturer's website for your specific computer model to confirm the wiring details.