

Seclusion Room Intercom With En-Suite and Music Option System Drawings

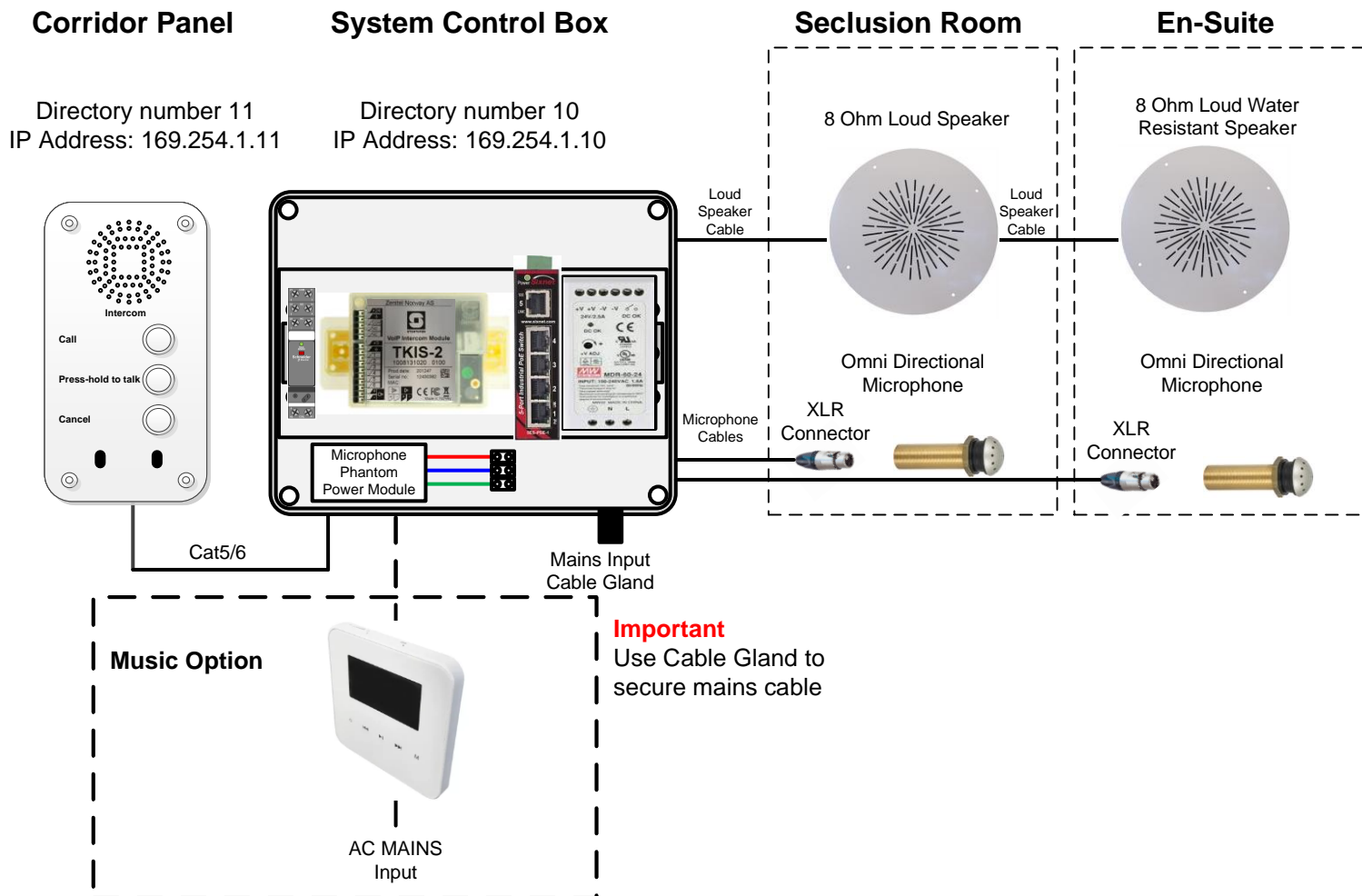
**Please Read All Installation Instructions
Before Installing**

Please Note

**All equipment packaging must be kept safe and
in a new condition until the system is fully
installed, tested and excepted by the client.**

**Any faulty equipment returned for repair or
replacement must be supplied in original
packaging and with accessories and
documentation.**

Seclusion Room Intercom with En-Suite and Music Option



Installation

Corridor panel should be mounted with easy access to controls.
System Control Box can be mounted in the corridor ceiling, but may require access for maintenance.
Cable between Control Panel and System Control Box is CAT5e/6 cable.
Cable for microphones should be microphone cable, 2 core plus Screen.
The speakers requires 2 core speaker cable, use same type cable between Audio interface if fitted.

Recommendations

Microphones must be fitted where it can pickup speech and not equipment noise.
Loudspeakers and Microphones should be spaced at arms length so fitting of microphone can be carried out through the speaker aperture, also you can make off the microphone connections through the speaker aperture.

Operation

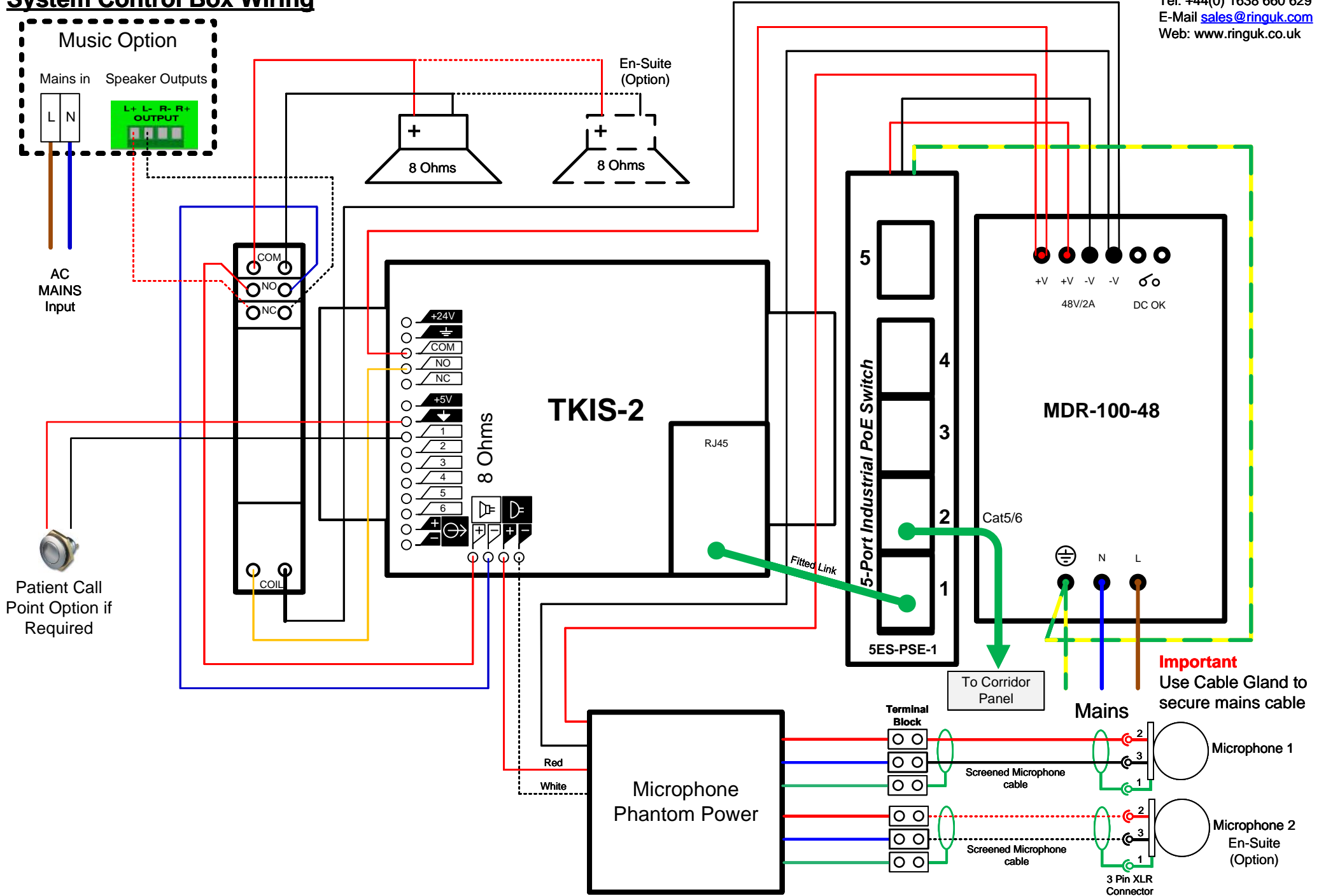
To communicate with the seclusion room, press the call button, then press and hold the middle button to talk to the patient, let go of the middle button to return to listen mode.

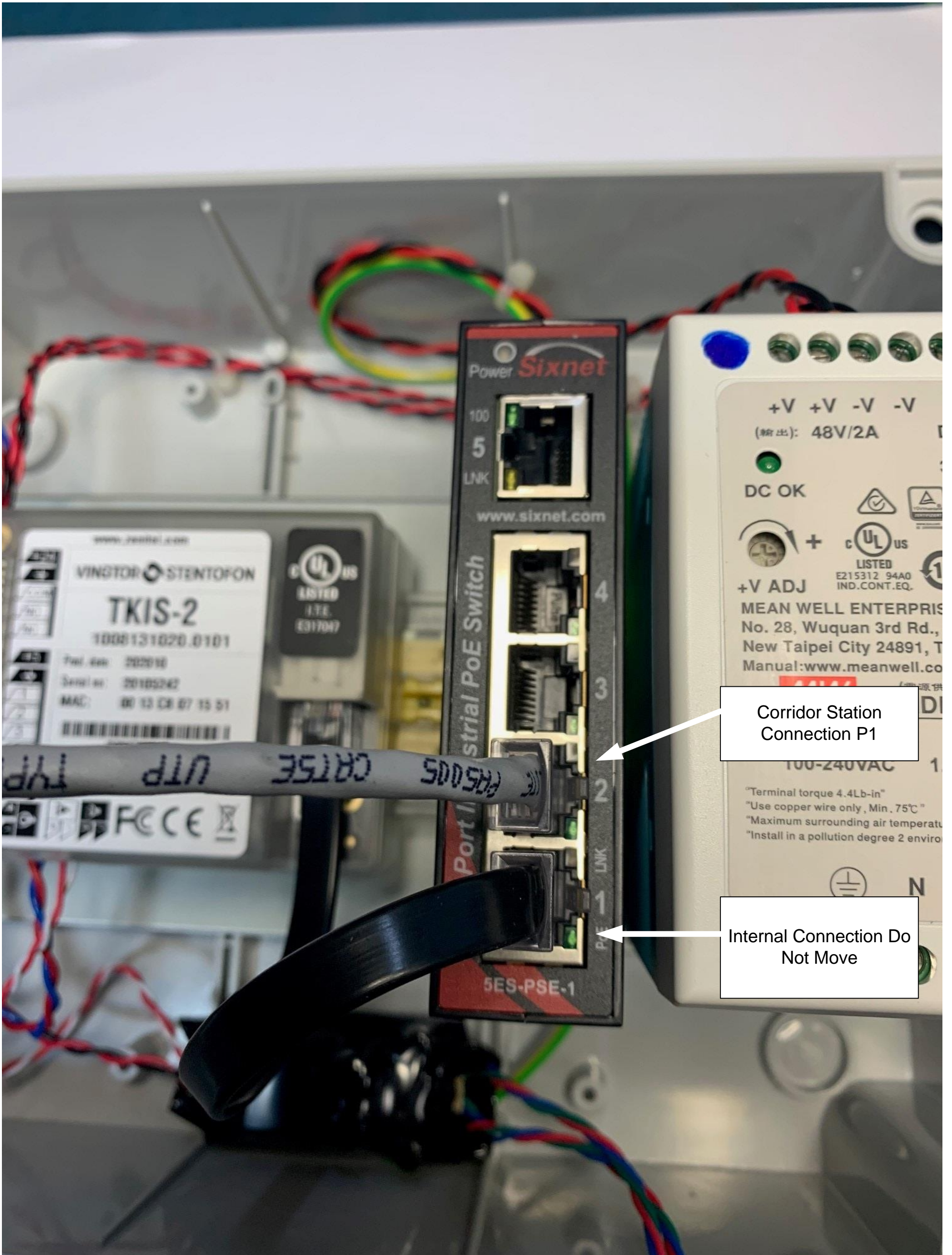
Patient cannot hear operator without the middle button being pressed.
When Pressing the middle button, relay will cut music from Audio interface (if fitted).

Close System

To cancel all communications (Switch OFF) press Cancel.
Music will still be heard from Avid to speaker.
Press ON/OFF button on Avid to turn OFF, then switch off music source.

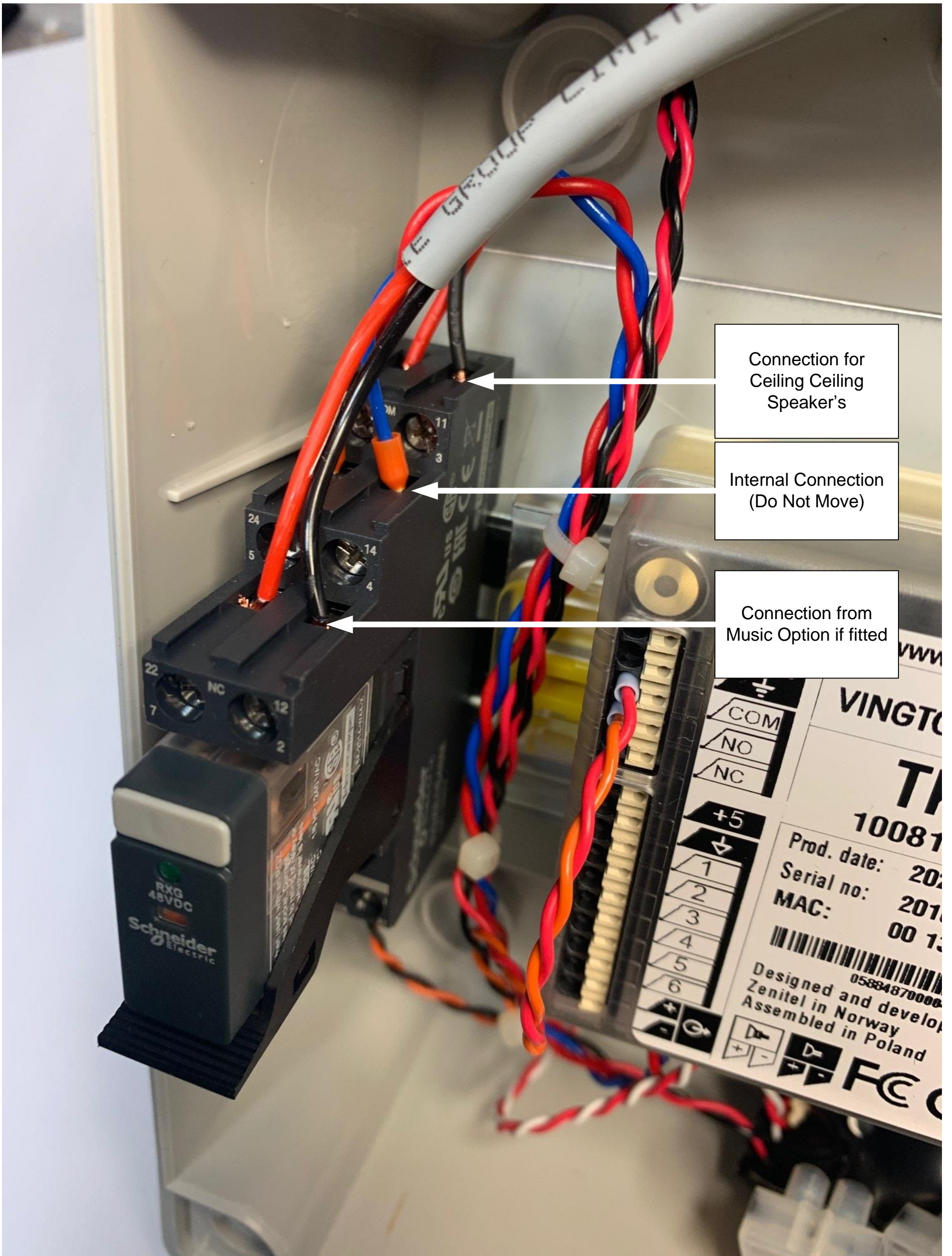
System Control Box Wiring





Corridor Station
Connection P1

Internal Connection Do
Not Move



Connection for
Ceiling Ceiling
Speaker's

Internal Connection
(Do Not Move)

Connection from
Music Option if fitted

VINGTO

TA

10081

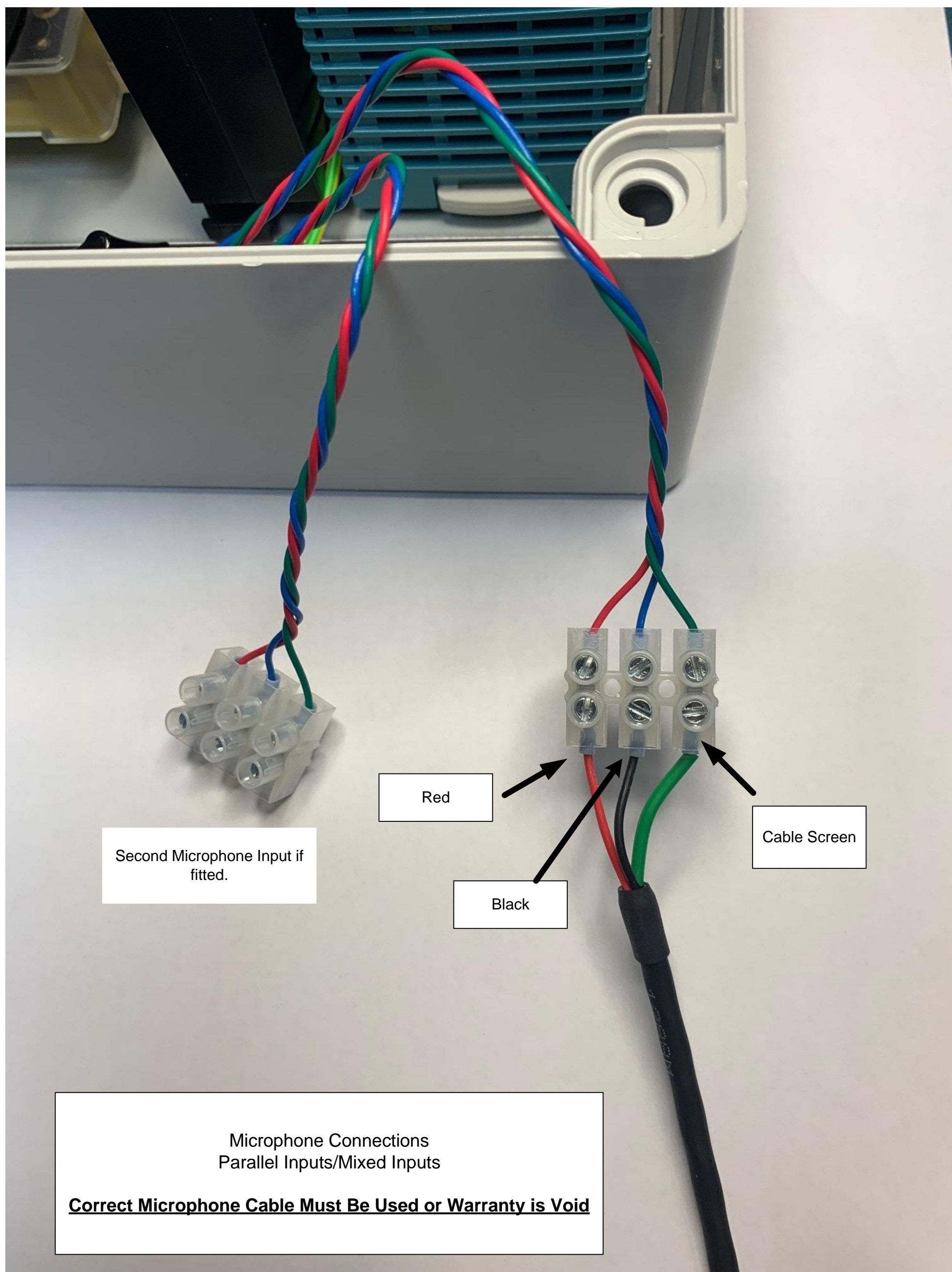
Prod. date: 20

Serial no: 201

MAC: 00 1

Designed and develop
Zenitel in Norway
Assembled in Poland

FC



Second Microphone Input if fitted.

Red

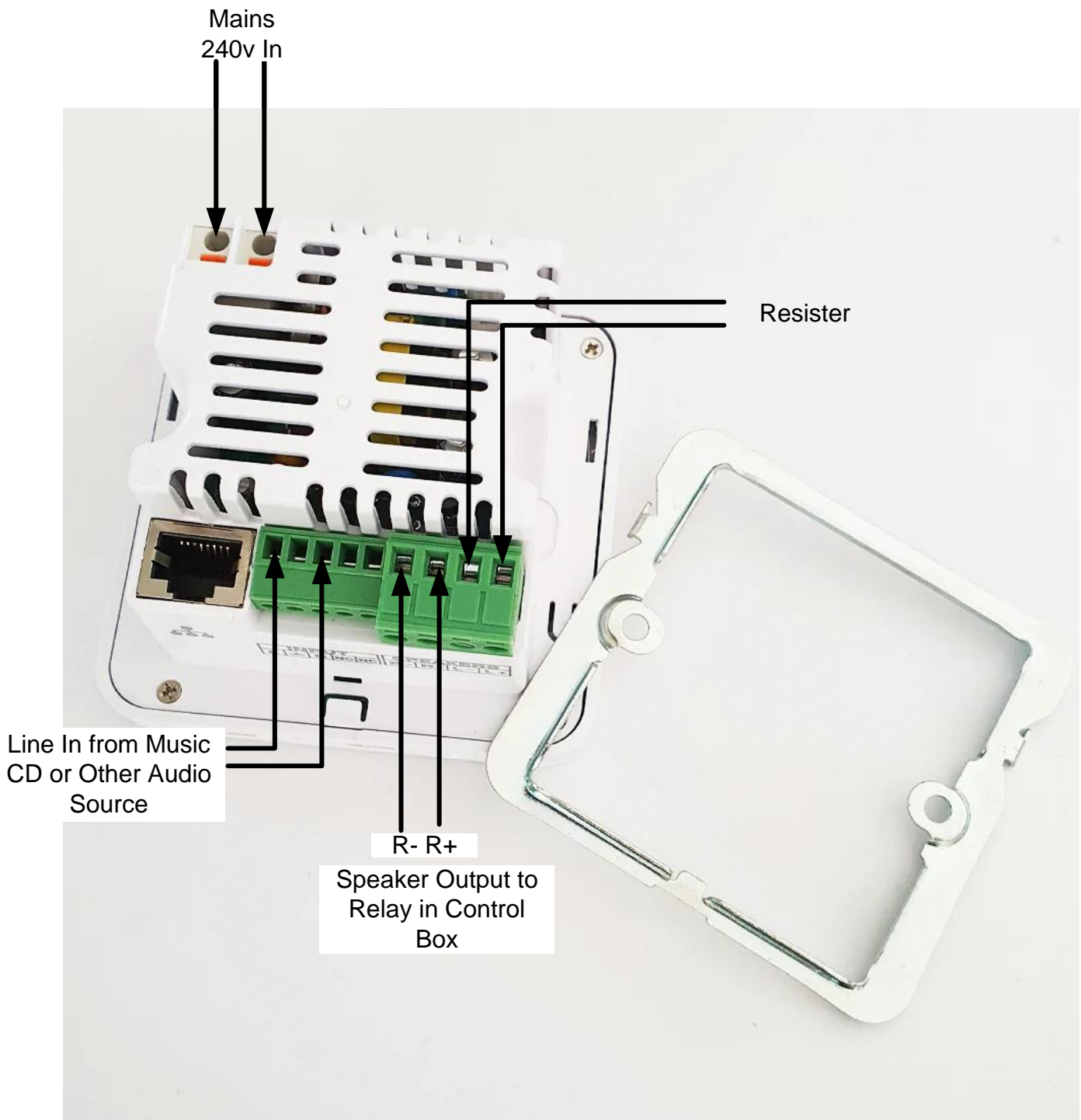
Black

Cable Screen

Microphone Connections
Parallel Inputs/Mixed Inputs

Correct Microphone Cable Must Be Used or Warranty is Void

Loops Bluetooth Connections



- We suggest you use ferrules on the connections.
- The resister must be fitted to the spare speaker output to protect the amplifier.
- Please see the User Instructions for setup

Loops Music Interface User Instructions



- Music Interface should have the following display, if it doesn't press the "M" button until you have this display.
- When you have this display you should see a blue flashing light in top right corner.
- On you phone go to Settings – select Bluetooth it should then be in discoverable mode.
- "smart audio" should appear as a source, select "smart audio" you will see a screen asking if to "allow" or "don't allow" connection, select "allow"
- The screen will then display as below, and you should have connection.
- Volume might need adjusting on you phone, then adjust the amplifier volume. The amplifier volume is on the top edge of the device.
- The Intercom only works in Mono, so for true sound output select Mono output on your phone. You can get instructions on how to do this on the internet.



P2
Auxiliary Connection

P1
Connection to Control
Box Network Switch

