

Seclusion Room Intercom with Music Option System Drawings

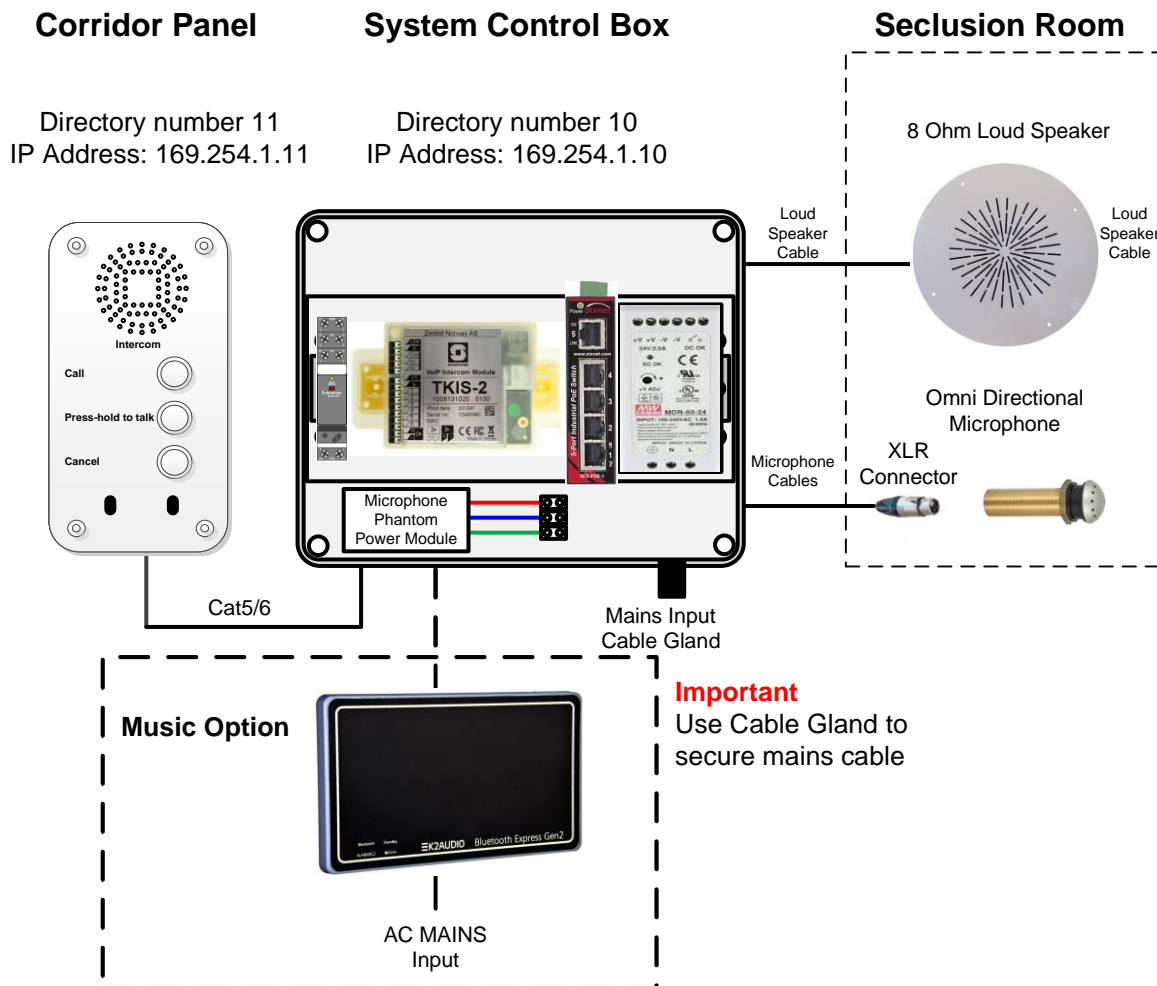
**Please Read All Installation Instructions
Before Installing**

Please Note

**All equipment packaging must be kept safe and
in a new condition until the system is fully
installed, tested and accepted by the client.**

**Any faulty equipment returned for repair or
replacement must be supplied in original
packaging and with accessories and
documentation.**

Seclusion Room Intercom with En-Suite and Music Option



Installation

Corridor panel should be mounted with easy access to controls.

System Control Box can be mounted in the corridor ceiling, but may require access for maintenance.

Cable between Control Panel and System Control Box is CAT5e/6 cable.

Cable for microphones should be microphone cable, 2 core plus Screen.

The speakers requires 2 core speaker cable, use same type cable between Audio interface if fitted.

Recommendations

Microphones must be fitted where it can pickup speech and not equipment noise.

Loudspeakers and Microphones should be spaced at arms length so fitting of microphone can be carried out through the speaker aperture, also you can make off the microphone connections through the speaker aperture.

Operation

To communicate with the seclusion room, press the call button, then press and hold the middle button to talk to the patient, let go of the middle button to return to listen mode. **Door between Seclusion room and observation/corridor room control panel should be shut to prevent feed back.**

Patient cannot hear operator without the middle button being pressed.

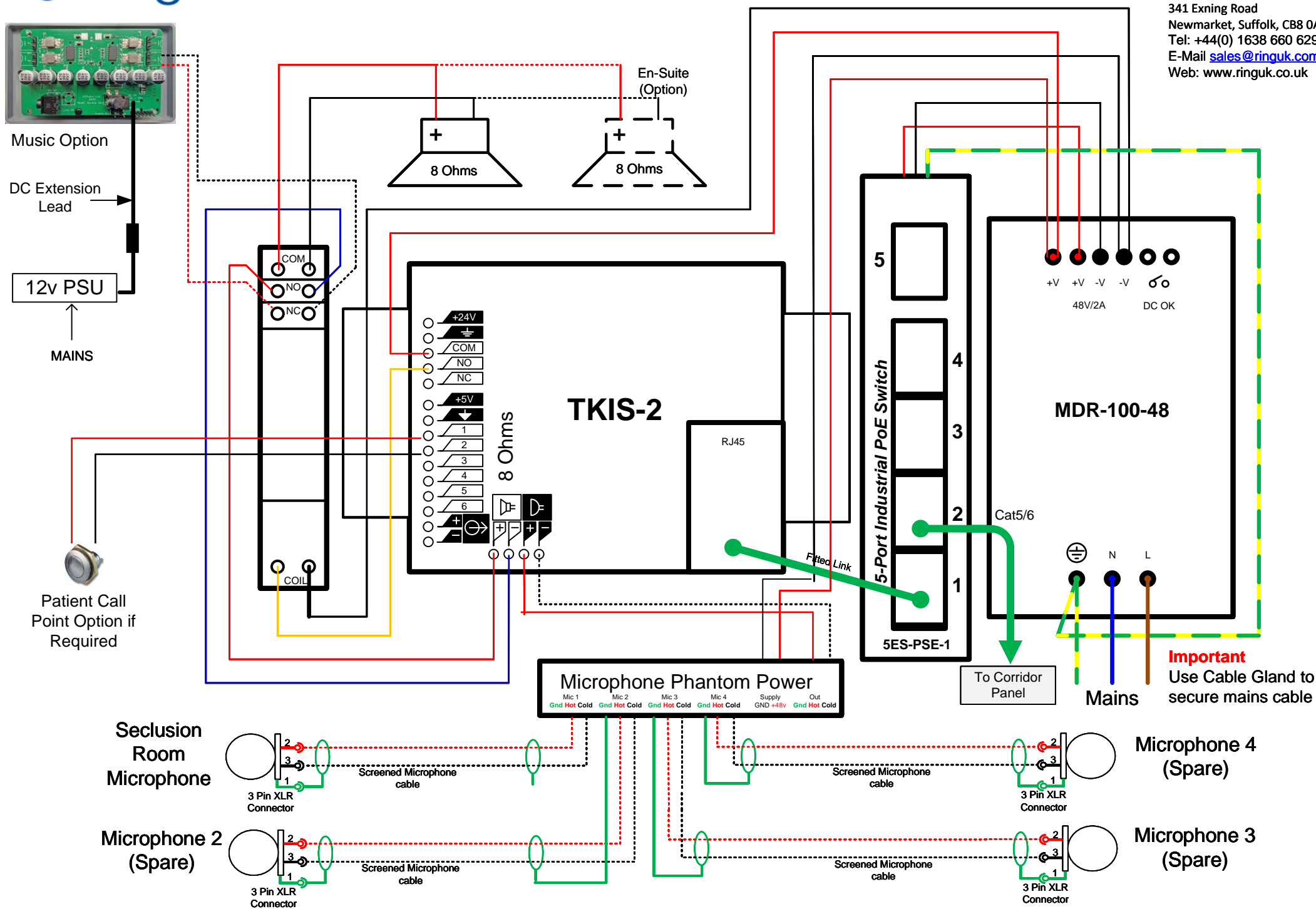
When Pressing the middle button, relay will cut music from Audio interface (if fitted).

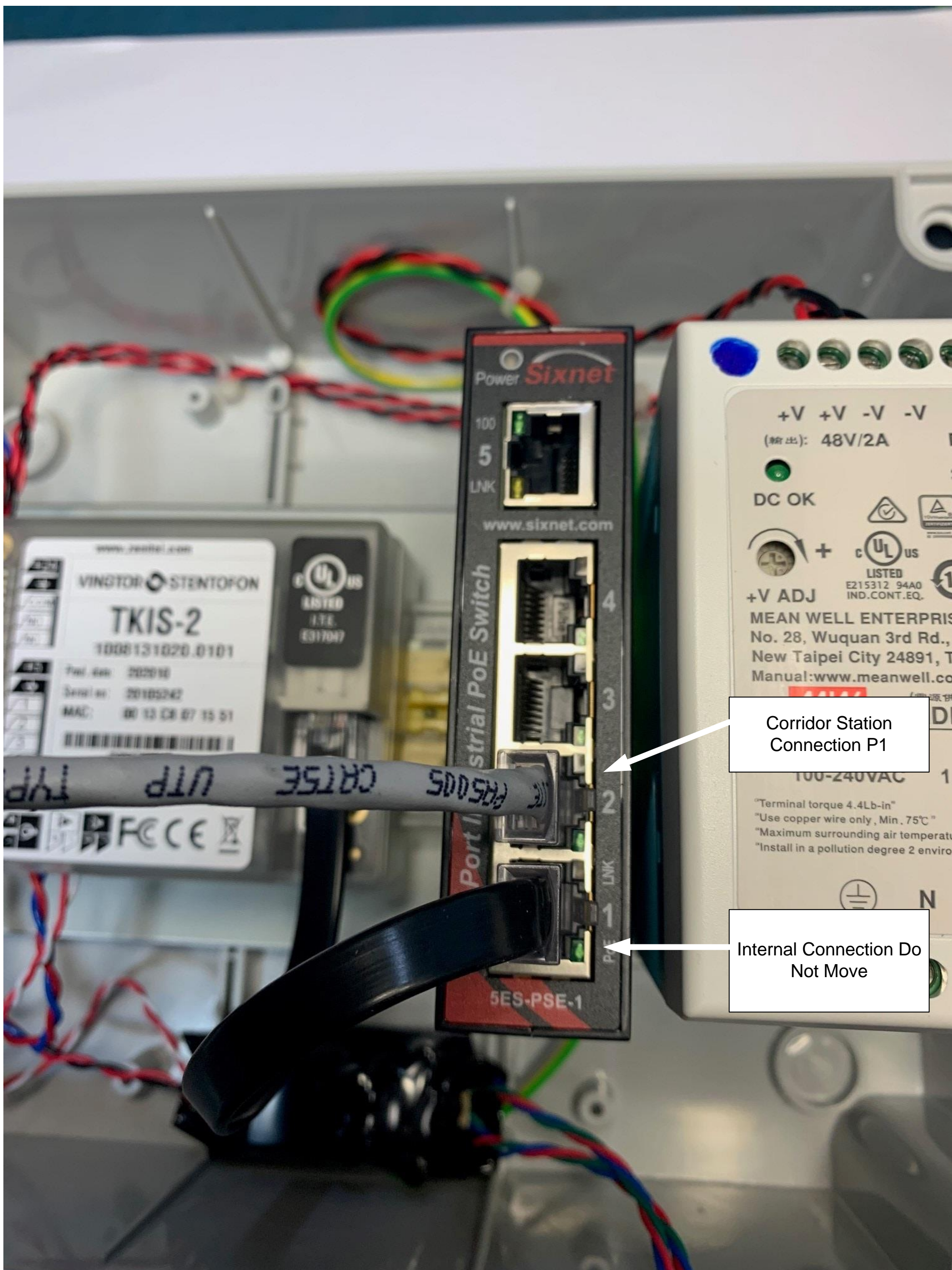
Close System

To cancel all communications (Switch OFF) press Cancel.

Music will still be heard from music interface to speaker.

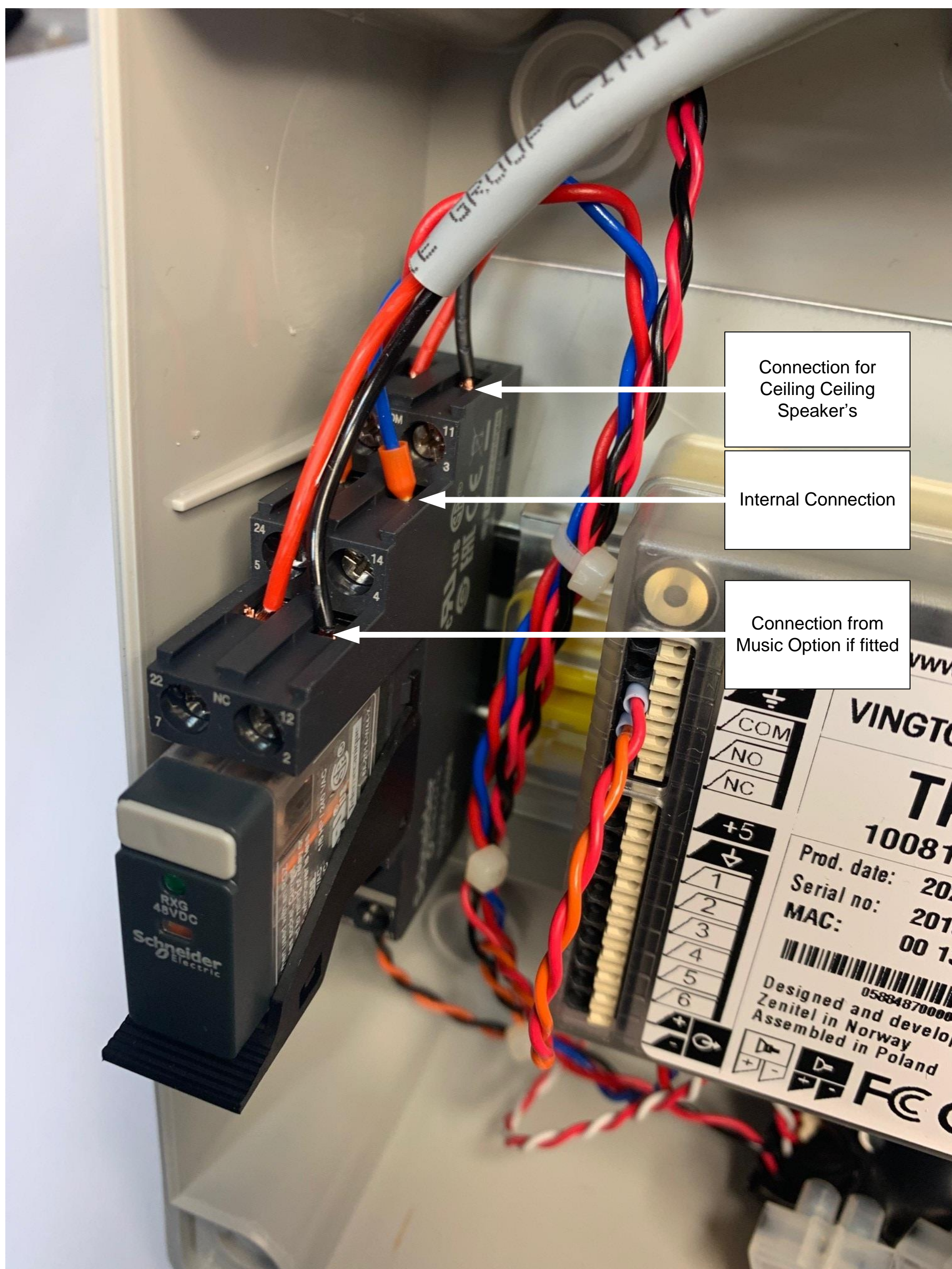
Turn off music on your Bluetooth source equipment, music interface will go into sleep mode automatically.

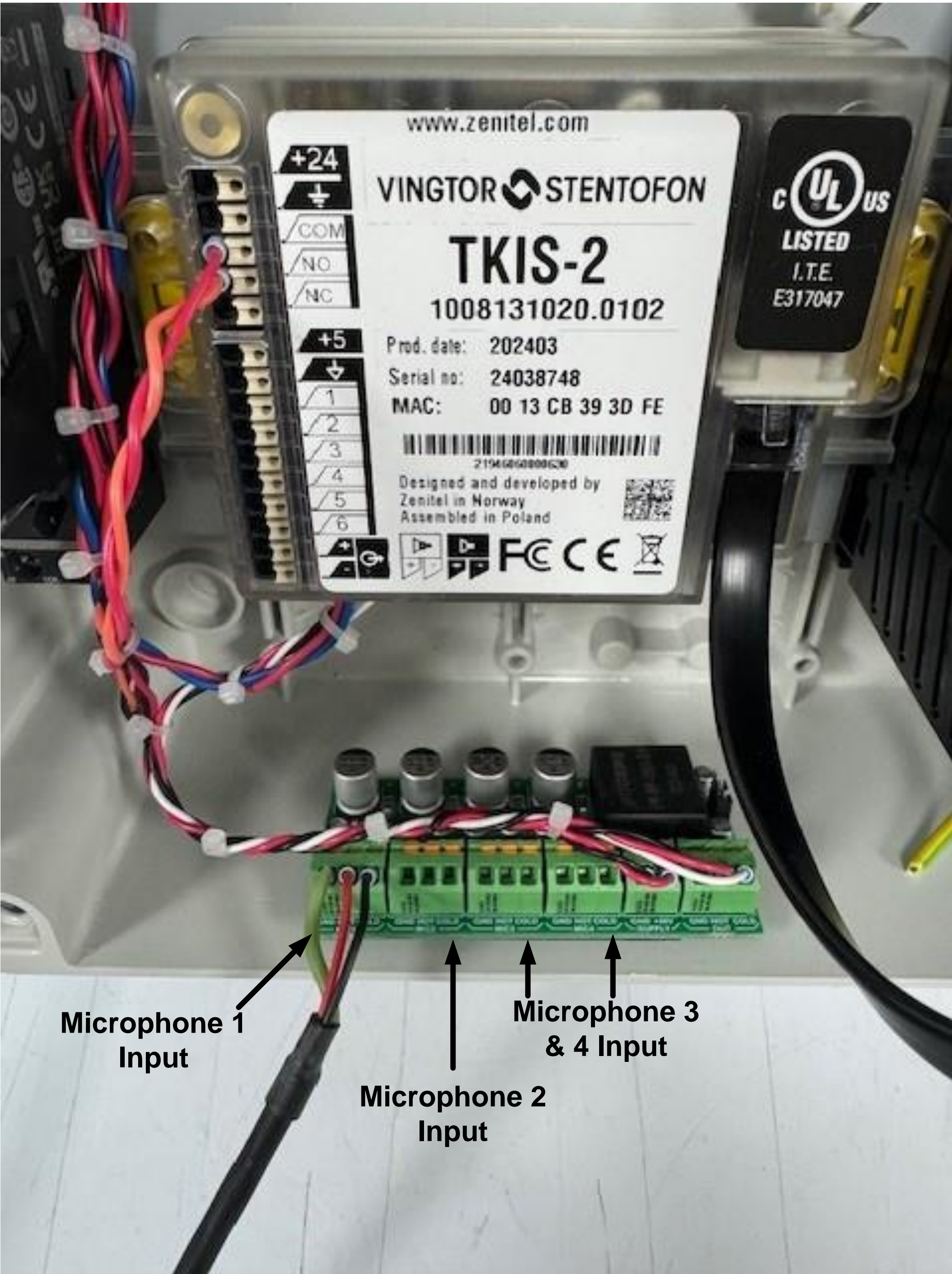




Corridor Station
Connection P1

Internal Connection Do
Not Move





www.zenitel.com

VINGTOR STENTOFON

TKIS-2

1008131020.0102

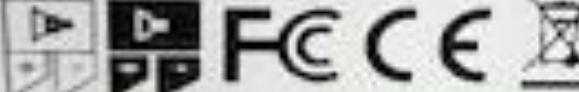
Prod. date: 202403

Serial no: 24038748

MAC: 00 13 CB 39 3D FE



Designed and developed by
Zenitel in Norway
Assembled in Poland

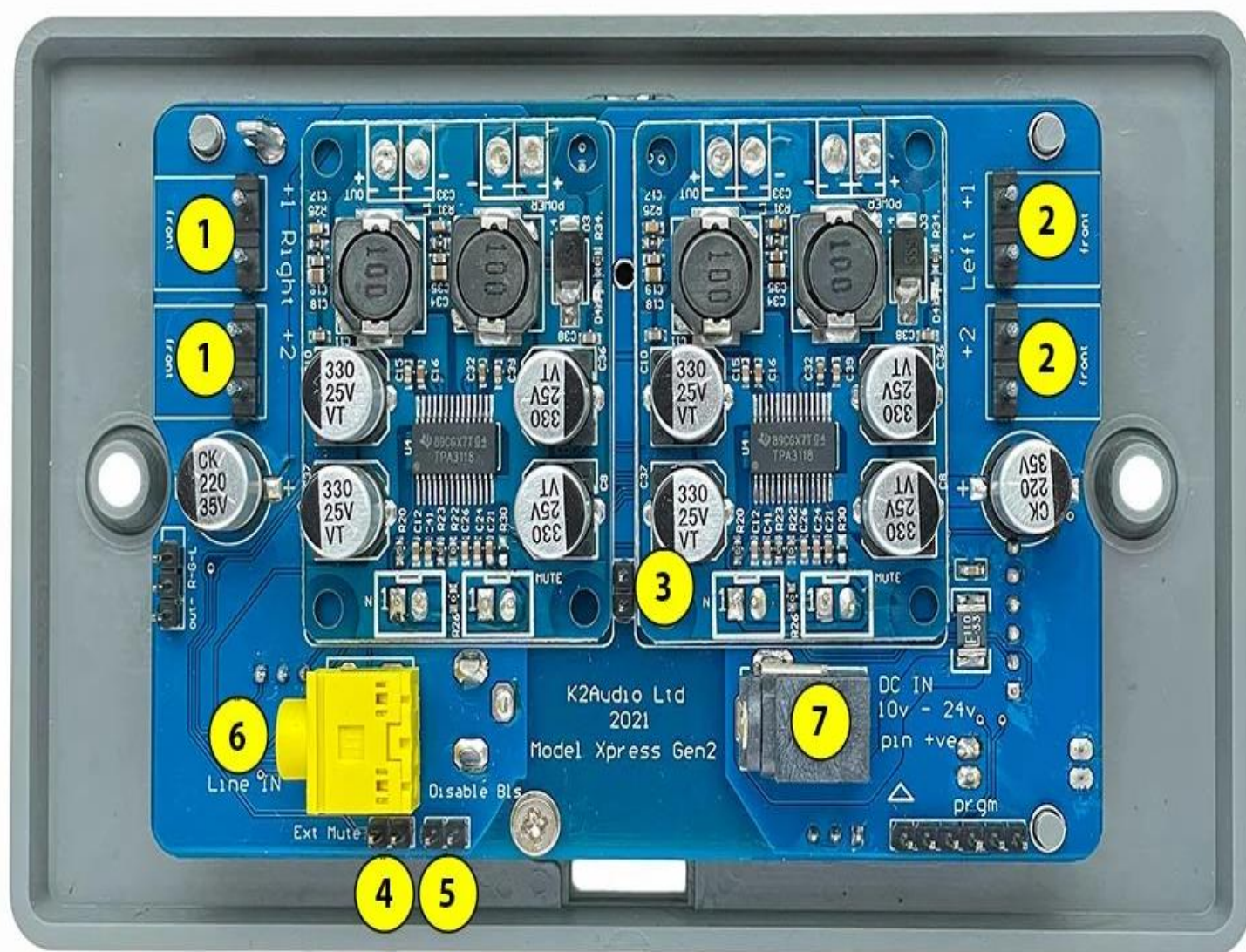


UL
LISTED
I.T.E.
E317047

Microphone 1
Input

Microphone 2
Input

Microphone 3
& 4 Input



- 1 Right channel loudspeaker connections
- 2 Left channel loudspeaker connections
- 3 Make link to enable mono mode
- 4 Connection for voltage mute 
- 5 Make link to disable BLE configuration
- 6 Rear line input 3.5mm jack (not fitted to all models)
- 7 Power supply connection 2.1mm

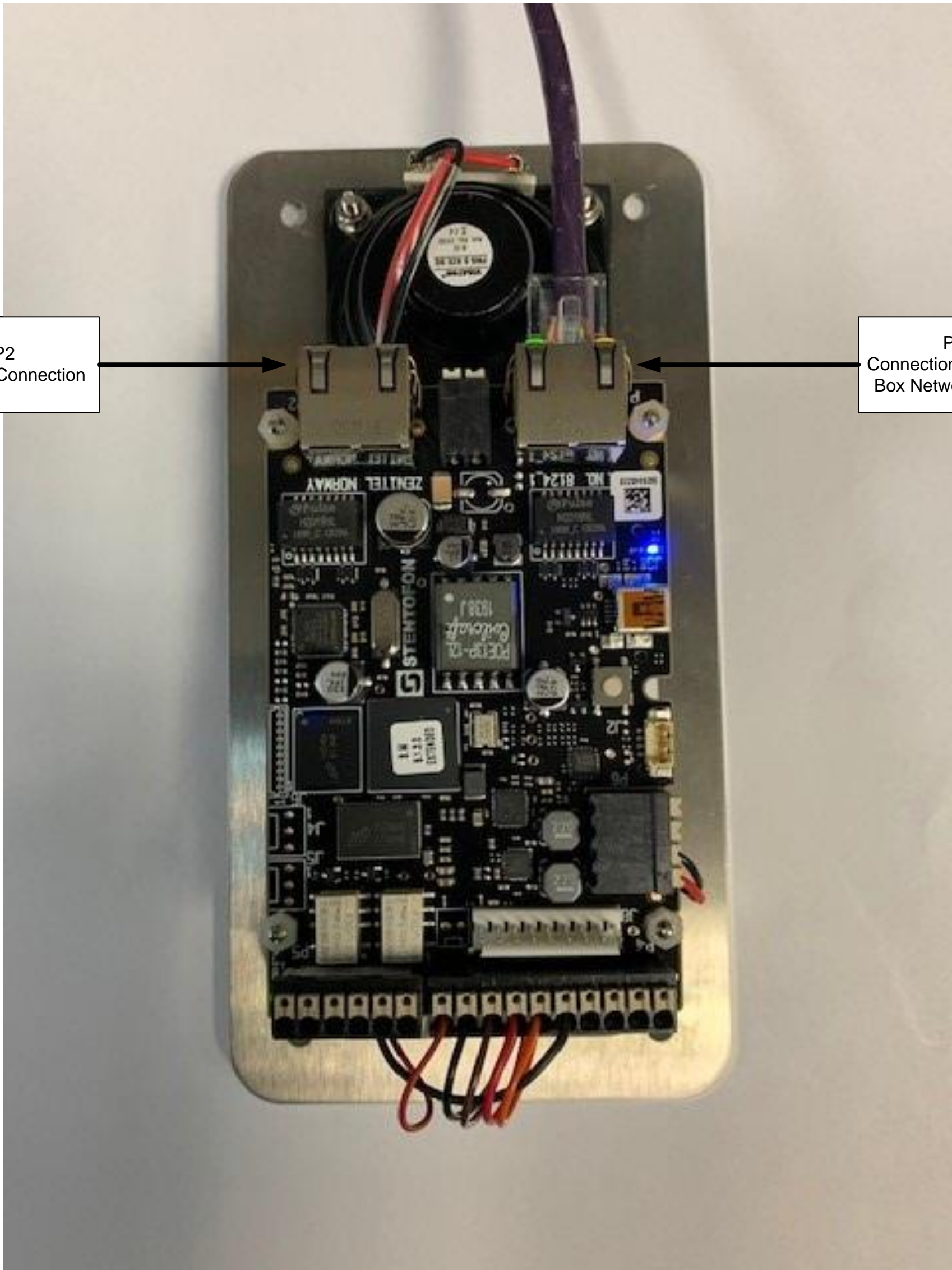
K2 Interface User Instructions



- Turn on your Bluetooth on your phone or pad.
- "Seclusion Music" should appear.
- Select, you should not need a PIN except if your organization as requested one, if the system asks for a PIN this should be on the front panel of the music unit devise.
- If the devise is connected the bluetooth LED should be solid, not flashing.
- If the LED is flashing you are not connected correctly, please try connecting again.
- If connected you should now be able to play music and control volume vie you phone or pad.

P2
Auxiliary Connection

P1
Connection to Control
Box Network Switch



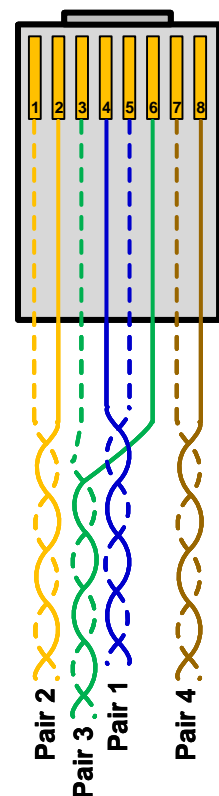
Wiring for RJ45 Wall Sockets and Plugs (T568B)

See Application Specification Sheet for wiring of
Wall Sockets
T568B

NOTE

It is important that when wiring RJ45 plugs that you keep to Standard wiring. The recommended Standard for Stentofon Intercoms is T568B. The Cable should be Cat 6 Copper with good quality RJ45 plugs. It is important that the pairs are used correctly.

Wiring for RJ45 Plug
(T568B)



Most Common Installation Problems.

System Fault

"When testing the system, you press any button on the corridor station, and you hear numbers being announced, e.g., '169 254 1 11'."

Proposed Fix

"This is a common problem with the connections of the CAT5/6 cable between the Control Panel and the central control box. Please check your connections. The station is receiving power but no data."

System Fault

"If you press the 'CALL' button and hear feedback, such as whistling..."

Proposed Fix

"Check that the door between the seclusion room and the room with the control panel is closed. Also, ensure there are no open voids, such as unfitted windows or unfinished walls."

System Fault

"The system is working; however, although you have pressed the 'CALL' button, you cannot hear the person in the seclusion room."

Proposed Fix

"The most common issue is a connection problem. Please check the wiring between the microphone in the ceiling and the input to the phantom microphone amplifier."